

201.net

DISCRETE SEMICONDUCTOR TEST SYSTEM

Uses:

- Parametric Testing
 - Commercial
 - Military
 - Aerospace
- Production Testing
- Batch Sorting (Binning)
- Screening
- Quality Assurance Testing

Features:

- Voltage Tests to 2000VDC
- Current Tests to 200A
- 0.5% Basic Measurement Accuracy
- Programmable Test Voltage and Current
- Four-terminal Kelvin Connections
- Text and Graphical Display of Data Reports
- Easy Programming and User-friendly System Control
- Handler Interface for Automated Applications
- Multiple Test Terminal Configuration
- Internal Calibration Verify
- Custom test design

For more detailed specifications, visit

www.semitek.com

Call 1-888-SEMITEK
or (972) 783-8100

Fax: (972) 783-8293

e-mail: info@semitek.com



The SemiTek 201.net performs more tests on more devices than any other tester in its class.

Introduction

The 201.net is fully programmable to electrically test and ensure the integrity of discrete semiconductor devices. The system is modular in design with each stimulus module individually addressable for specific test requirements.

The system is PC powered and can connect to your local area network for control, program management, and data processing. Multiple systems can be networked to complete production applications.

The .net architecture makes the 201 and XTOS operating system the most versatile, simplistic, and economical, discrete semiconductor test system available in its class.

In its sixth generation, the 201.net is ideal for inspection and production applications where precision measurements are required.

System Overview

Test capabilities:

- Leakage Current
- Breakdown Voltages
- Conducting Current
- Optical Intensity
- Component Gains
- Thermal Resistance
- On/Off Testing
- Surge
- Avalanche/Inductive Load Voltages
- Holding Test for Thyristors
- Gate Triggering Parameters

Operation: The 201.net XTOS is compatible with Microsoft Windows 7 Professional®. Engineers program and operators control the 201.net from the XTOS Main Window. Engineers use the XTOS Build Editor to generate and maintain test files specifying every action of the tester. Test results are stored in comma delimited text files for analysis and by virtually any external programs including Microsoft's Excel® and Word®.

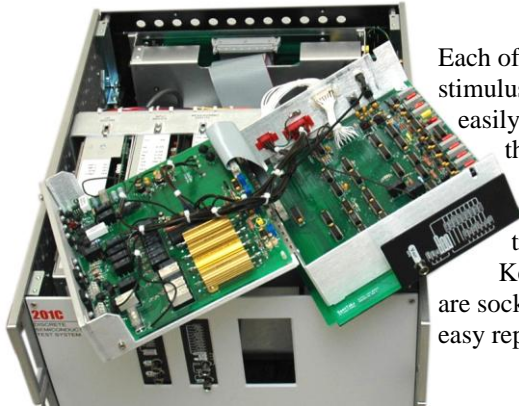
SemiTek
INTERNATIONAL



201.net DISCRETE SEMICONDUCTOR TEST SYSTEM

Routine maintenance is essential in production environments and the 201.net Test System is designed with maintainability in mind. From theory of operation to component replacement, the 201.net provides easy to follow schematics, diagnostic applications, and socketed components. The 201.net simplifies maintenance, troubleshooting, and repair.

Mechanical Design

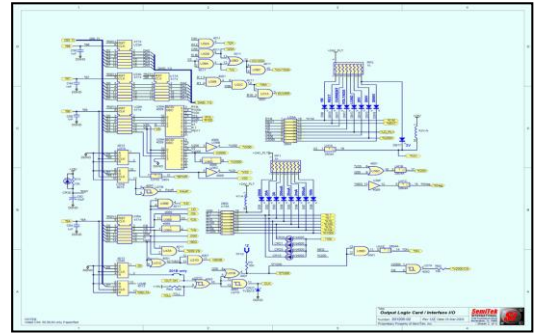


Each of the control and stimulus modules are easily extended from the Main Station with power applied for troubleshooting. Key components are socket mounted for easy replacement.

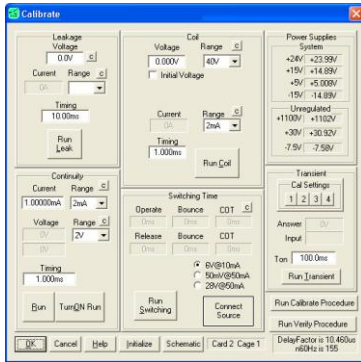


Detailed Schematics

Detailed circuit-level schematics make it easy to find and follow circuits in the entire system. Schematics are color-coded and include hyperlinks to operational theories in the manual.



Software Diagnostics



Calibrate/Debug software provides individual test/circuit control for each sub assembly in the tester, and displays pertinent data such as power supply voltages and calibration factors. Each window also provides access to the module schematic and Help information.

Factory Support

SemiTek's factory support goes beyond installation with . . .

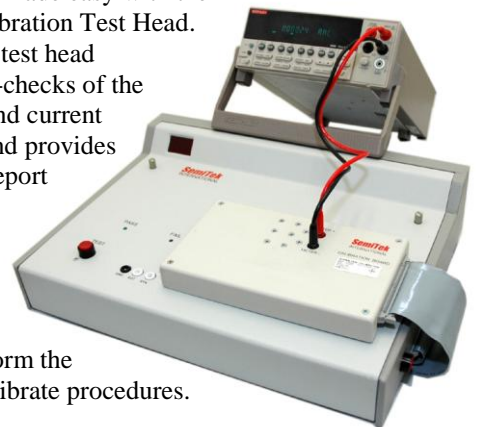
- One (1) year system warranty.
- Electronic media manual set.
- Software upgrades.
- Classroom programming, operation, and maintenance training.
- Service bulletin notification.
- Online support.

Additional fee services:

- Annual maintenance/service agreement.
- Flat rate exchange program at the module-level.
- Component-level spare parts kits.
- On-site service or training.

Semiautomatic Calibration

Calibration is made easy with the 0201314 Calibration Test Head. This optional test head performs self-checks of the DC voltage and current test ranges, and provides a hard copy report to document calibration. The test head requires an external meter to perform the verify and calibrate procedures.



870 N Dorothy Drive, Suite 714
Richardson, Texas USA 75081
(972) 783-8100 Fax (972) 783-8293

e-mail: info@semitek.com

www.semitek.com